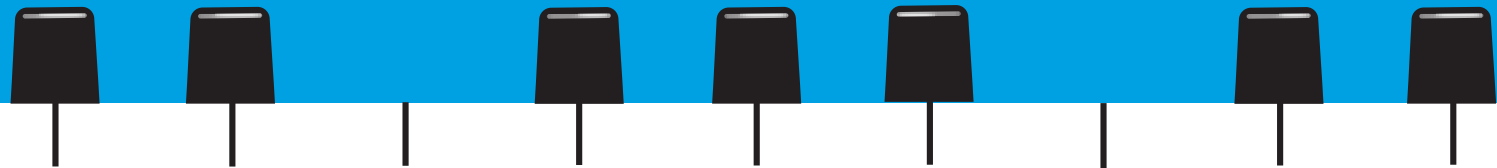


Melissa & Doug®

SONGBOOK

for the Beginning Musician

Row, Row, Row Your Boat • Mary Had a Little Lamb
Twinkle, Twinkle, Little Star • A Tisket, a Tasket • Old MacDonald
London Bridge Is Falling Down • Pop, Goes the Weasel
The Farmer in the Dell • I'm a Little Tea Pot



Row, Row, Row Your Boat



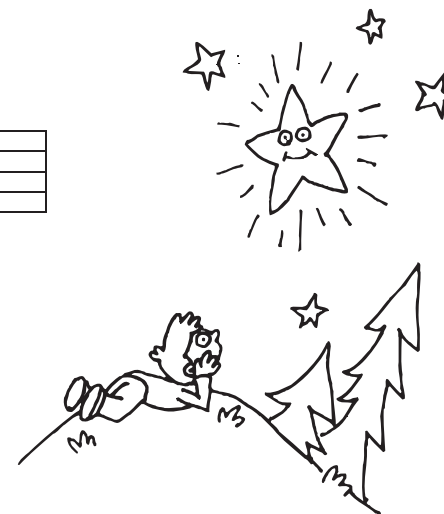
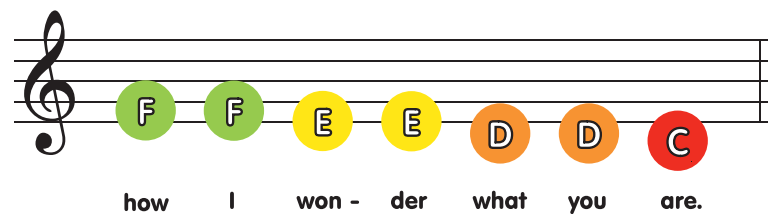
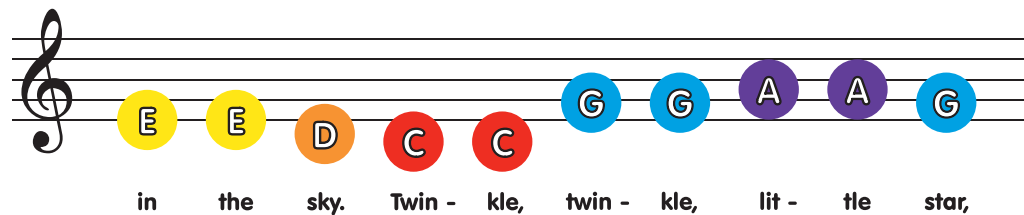
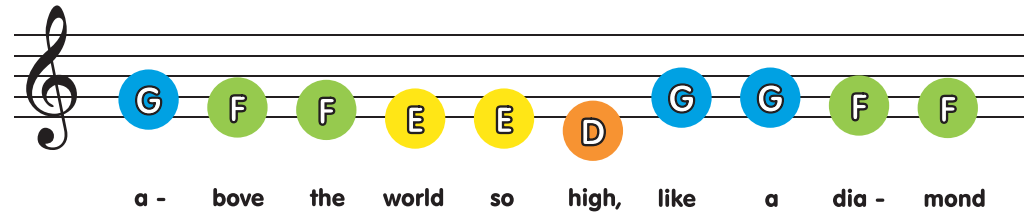
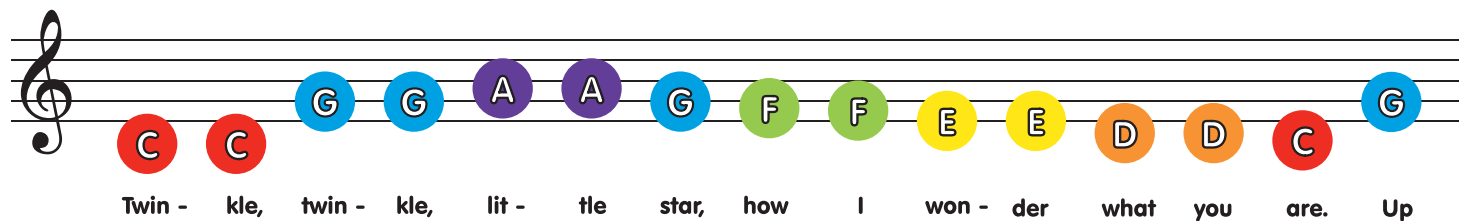
Row, row, row your boat, gently down the stream. Merr - i - ly, merr - i - ly, merr - i - ly, life is but a dream.

Mary Had a Little Lamb

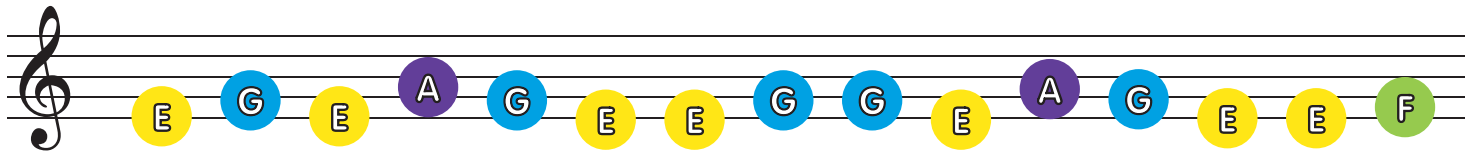
Ma - ry had a lit - tle lamb, lit - tle lamb, lit - tle lamb. Ma - ry - Eve - ry - where that Ma - ry went, Ma - ry went, Ma - ry went, eve - ry - had a lit - tle lamb, its fleece was white as snow. where that Ma - ry went, the lamb was sure to go.



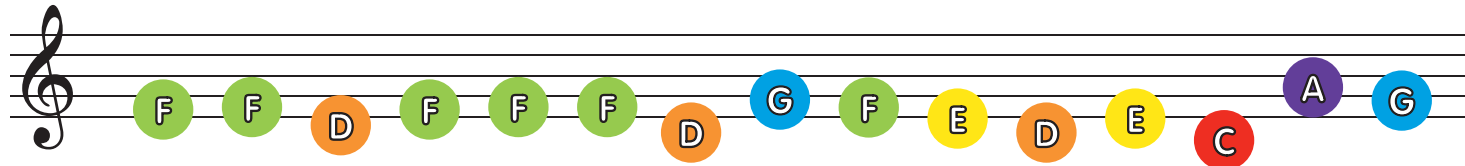
Twinkle, Twinkle, Little Star



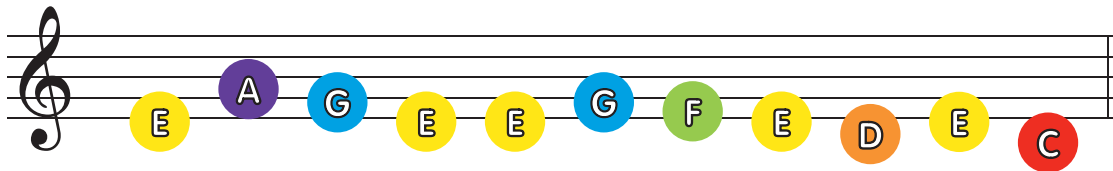
A Tisket, a Tasket



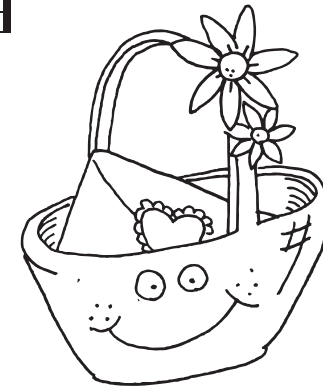
A tis - ket, a tas - ket, a green and yel - low bas - ket. I wrote

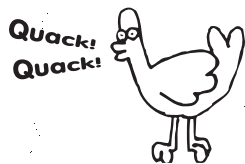


a let - ter to my love, and on the way I dropped it. I dropped



it, I dropped it. Yes, on the way I dropped it.





Old MacDonald

Melissa & Doug

Old Mac - Don - ald had a farm, EE - I - EE - I - O. And on that

farm he had a duck, EE - I - EE - I - O. With a quack - quack here,

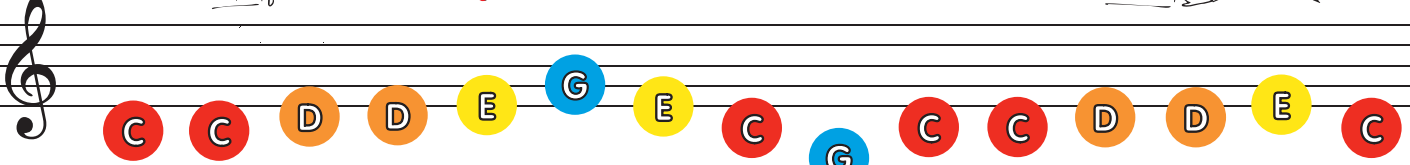
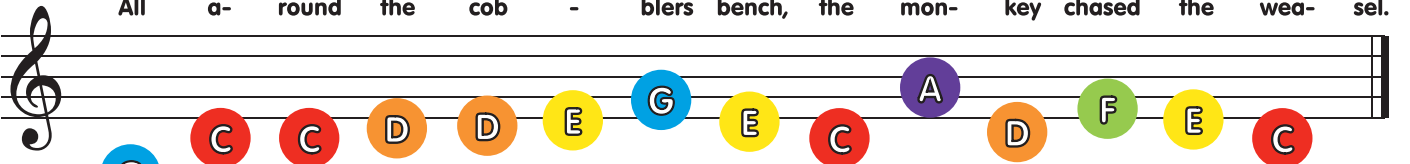
and a quack - quack there. Here a quack, there a quack, eve - ry - where a

quack - quack. Old Mac - Don - ald had a farm, EE - I - EE - I - O.



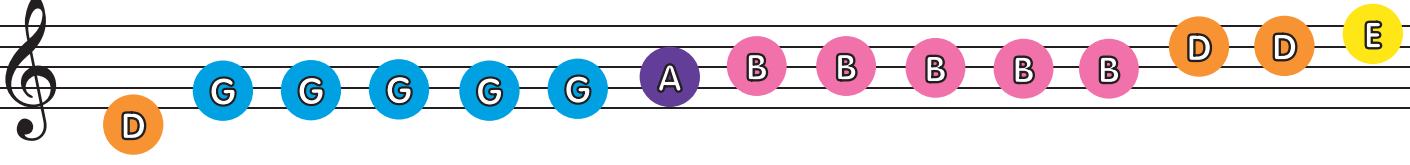
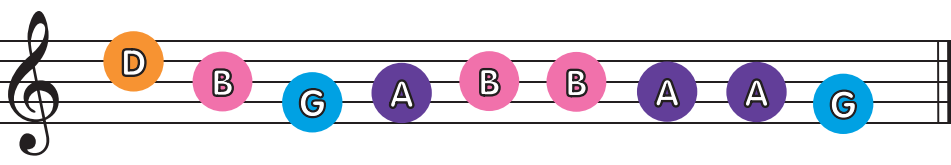
Pop, Goes the Weasel*




 All a- round the cob - blers bench, the mon- key chased the wea- sel.

 The mon- key thought, 'twas all in good fun. Pop, goes the wea- sel.

*This song must start on the middle 'C'.

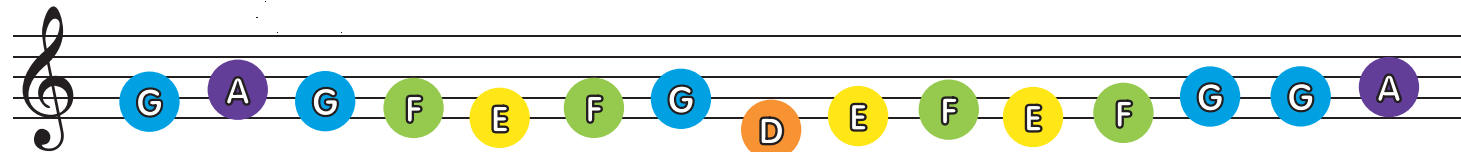
The Farmer in the Dell**


 The far- mer in the dell, the far- mer in the dell, hi ho the

 der- ry- o, the far- mer in the dell.

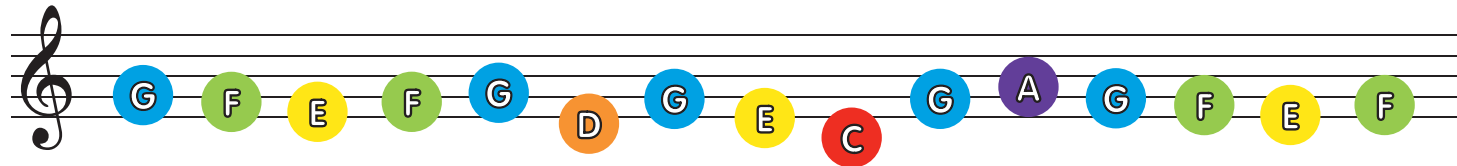


**This song must start on the lower (far left) 'D'.

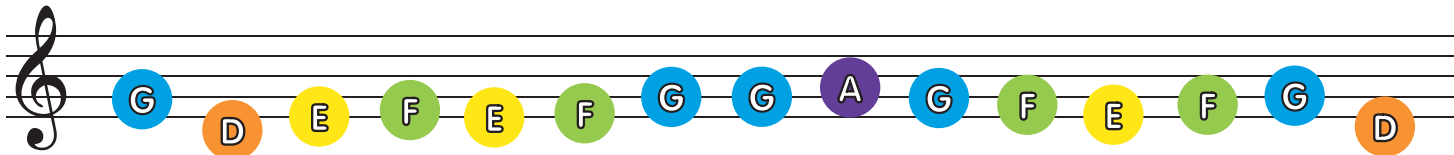
London Bridge is Falling Down



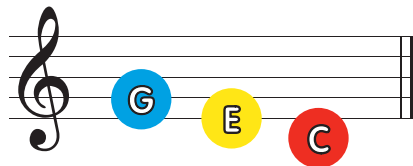
Lon- don bridge is fall- ing down, fall- ing down, fall- ing down. Lon- don



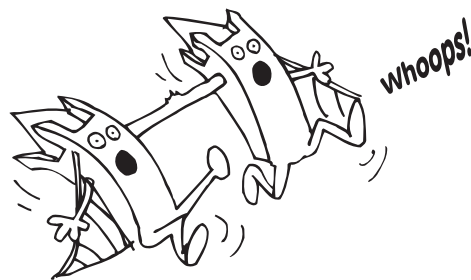
bridge is fall- ing down, My fair la- dy! Take the key and lock her



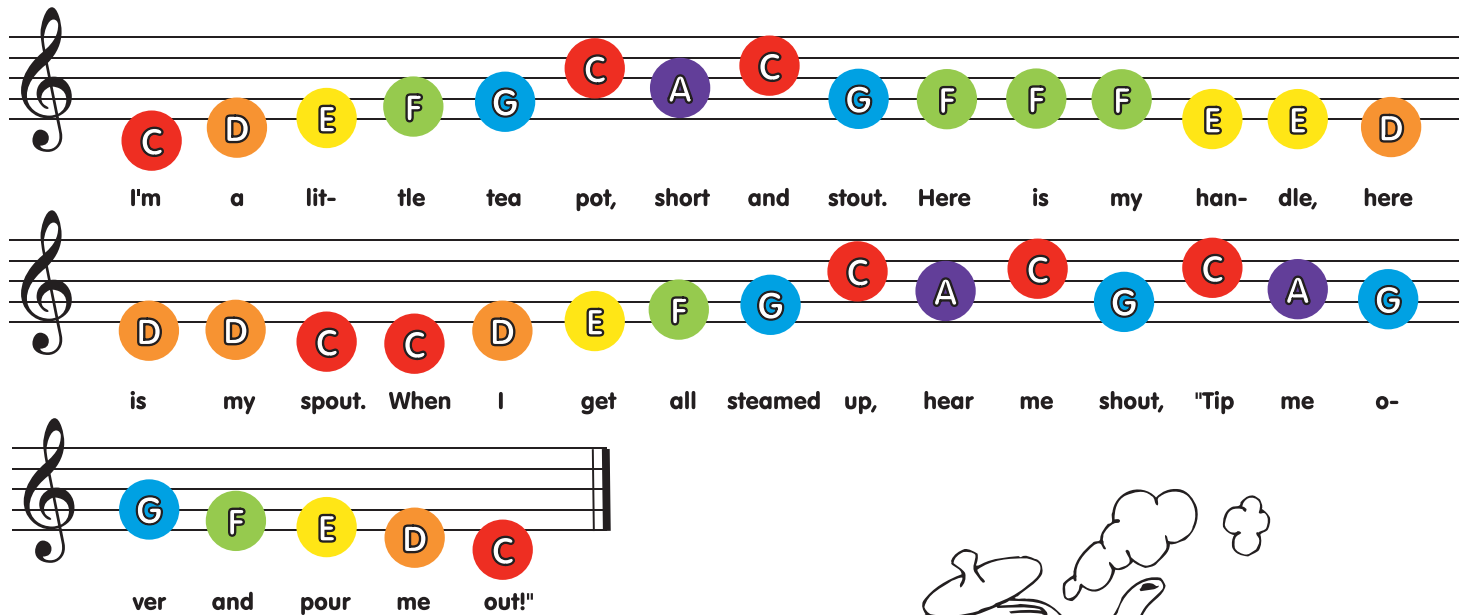
up, lock her up, lock her up. Take the key and lock her up, My



fair la- dy.



I'm a Little Tea Pot

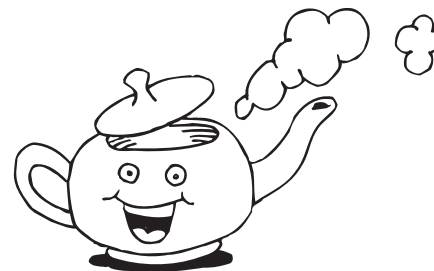


The musical notation is presented on three staves. Each note is a colored circle with a letter inside, placed on a specific line of the staff. The lyrics are written below the notes.

Staff 1: C (red, 1st line), D (orange, 2nd line), E (yellow, 3rd line), F (green, 4th line), G (blue, 5th line), C (red, 1st line), A (purple, 3rd space), C (red, 1st line), G (blue, 2nd line), F (green, 4th line), F (green, 4th line), F (green, 4th line), E (yellow, 3rd line), E (yellow, 3rd line), D (orange, 2nd line).
 I'm a lit- tle tea pot, short and stout. Here is my han- dle, here

Staff 2: D (orange, 2nd line), D (orange, 2nd line), C (red, 1st line), C (red, 1st line), D (orange, 2nd line), E (yellow, 3rd line), F (green, 4th line), G (blue, 5th line), C (red, 1st line), A (purple, 3rd space), C (red, 1st line), G (blue, 2nd line), C (red, 1st line), A (purple, 3rd space), G (blue, 2nd line).
 is my spout. When I get all steamed up, hear me shout, "Tip me o-

Staff 3: G (blue, 2nd line), F (green, 4th line), E (yellow, 3rd line), D (orange, 2nd line), C (red, 1st line).
 ver and pour me out!"



We care about your comments. Please call us!

Melissa & Doug

1-800-284-3948
www.MelissaAndDoug.com

Melissa & Doug products meet or exceed all U.S. toy testing standards and pass our high quality requirements.

© Melissa & Doug, LLC, P.O. Box 590, Westport, CT 06881

AGES 3+

#8960 - Songbook